

2200

ELECTRONIC VIDEO ENDOSCOPY SYSTEM

FUJINON
FUJIFILM

Fujinon introduces a higher standard for electronic video endoscopy with the newly designed 2200 System.

Setting a new criteria for diagnostic and therapeutic endoscopy, the 2200 System provides physicians with Fujinon's world-class imaging and the exceptional ergonomics of the newly designed G-5™ Endoscopes.



Compact size

Compact size with select functions for easy operation during routine examination.



Bright, clear and sharp images

Bright, clear and sharp images generated by the newly developed xenon lamp and high-resolution CCD.

LIGHT-1
FILM 02
1997

2200

ELECTRONIC VIDEO ENDOSCOPY SYSTEM



Optimal scope maneuverability

The newly developed grip and low-torque angulation controls contribute to optimal scope maneuverability.

NEW FUJINON G-5™ VIDEO ENDO

LESS WEIGHT, LESS TORQUE, LESS FATIGUE

The newly developed light-weight and compact grip fits into your hand and enhances scope maneuverability with redesigned easy-to-reach control wheels.

Reduced Size and Weight



Compared with previous version

G-5™ ENDOSCOPY

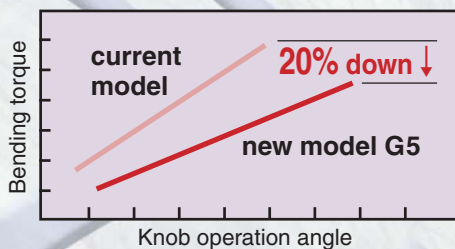
SCOPES

-MORE PRODUCTIVITY!

Reduced Operating Torque

The new grip, 20% less in weight and 10 mm slimmer in circumference, improves scope operability.

With the redesigned easy-access controls, handling of the new instrument range will be more ergonomic and simpler than ever before.



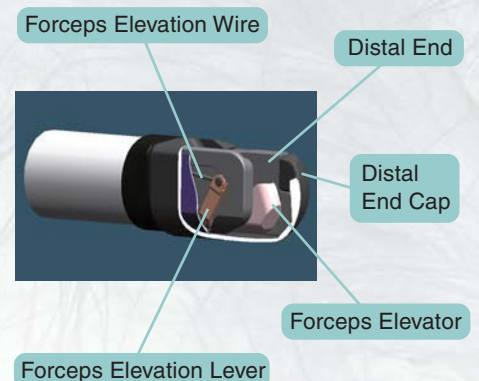
Improved Cleaning and Disinfection

The gentle convex control body with its unique, anti-slip contours creates a smoother, flatter surface assuring all areas receive optimal exposure contact with cleaning and high-level disinfecting solutions.



Critical Features

G-5™ Duodenoscopes Utilize a New, Self-contained Elevator Mechanism



Our new duodenoscope features a completely self-contained accessory elevator system that provides a precisely designed distal elevator mechanism resulting in significantly reduced elevation torque while allowing for intricate operational adjustments required during most therapeutic endoscopy procedures. In addition, the sealed channel reduces cleaning and disinfection concerns.

Improved Operability

New positioning of all functional switches and Air/Water/Suction buttons minimizes finger travel and improves efficiency (based on analysis of operating frequency of every switch and button).



The EPX-2200

Digital Processor and 150W Xenon Light Source Combination Unit

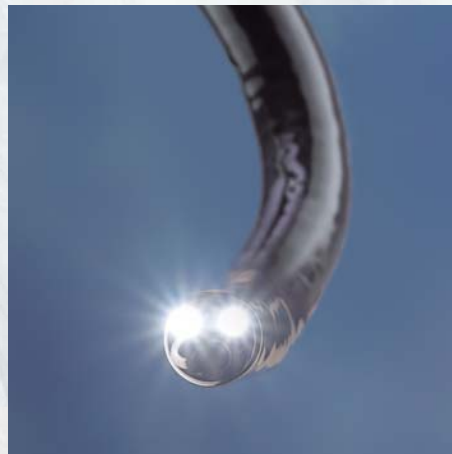


Smaller Size, Lighter Weight



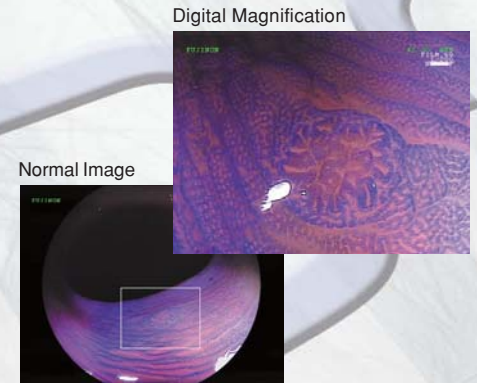
A Xenon Lamp is 400% Brighter

A 150 watt xenon lamp is four times brighter than similar halogen sources, and offers six times the lamp life.



Instant Magnification of High Resolution Images

A push of a button enables instant digital magnification of between 1.0 and 2.0 times. This feature is available with all of Fujinon's endoscopes.



Masafumi Tabuchi, M.D. Director, Nakameguro Shoukaki Clinic Tokyo

BLV (Blood Vessel Enhancement) Function

The BLV function allows for a more detailed visualization of blood vessels when necessary.



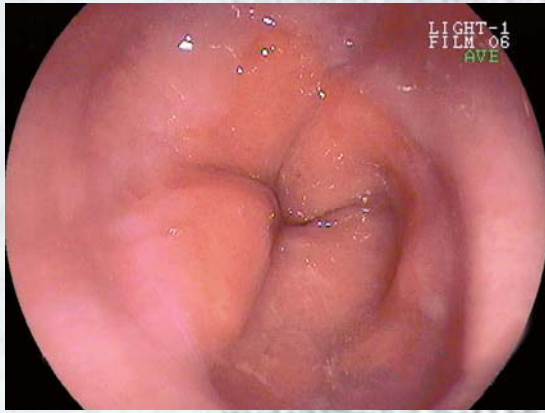
BLV OFF



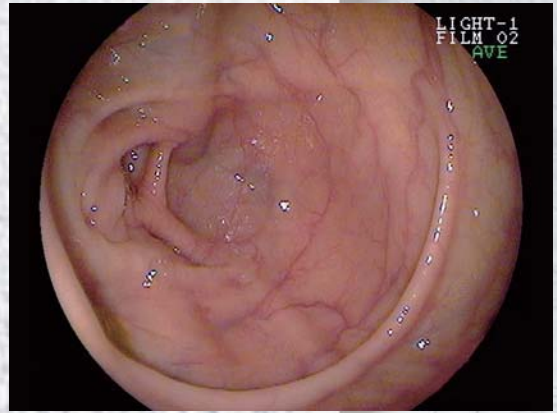
BLV ON

EPX-2200 Specifications

- TV system ——— NTSC/PAL
- Power supply ——— AC120V/230V
- Image zoom ——— Electronic Zoom X1.00 to X2.00 (0.05steps)
- Memory ——— Patient data-44 patients
Clinical procedure-20 procedures
- Light source ——— 150 watt Xenon lamp (Emergency lamp 75W Halogen lamp)
- Dimensions ——— 330(W) X 430(D) X 160(H)mm, 13 X 16.9 X 6.3 inches
- Weight ——— 16kg (35.2lbs)
- Image output ——— Video(BNC) 1 channel
S-Video 2 channels
RGB-VIDEO 2 channels



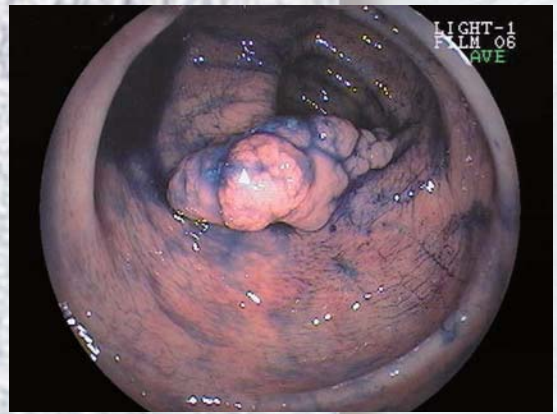
EG-250WR5



EC-250WM5



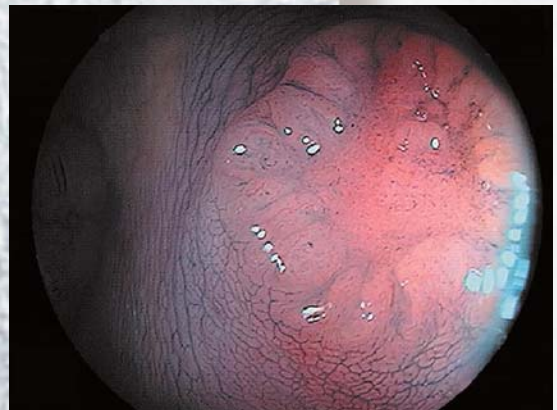
EG-250WR5



EC-250WM5



EG-250WR5



EC-250WM5

G5 Scope for the Upper G.I. Tract



For the Upper G.I. Tract -Standard type

EG-250WR5

EG-250WR5 combines high resolution imaging — a 410K-pixel CCD is contained within the narrow distal end — with an ultra-wide 140° field of view to produce images of outstanding accuracy and detail. It allows better observation of minute blood vessels as well as excellent imaging in routine examinations. The slimmer 9.4mm diameter eases insertion and facilitates more extreme angulation. The channel has a 2.8mm diameter.

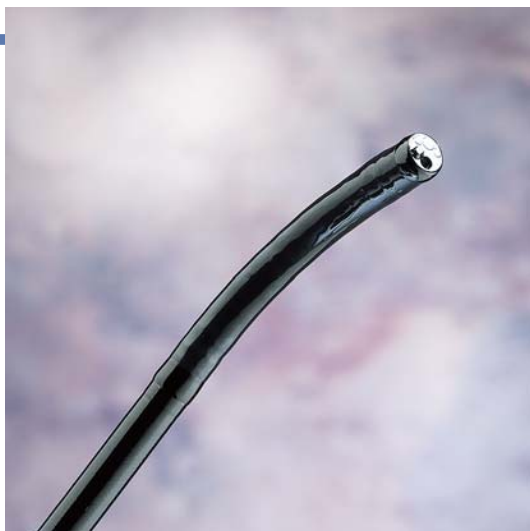
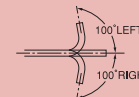
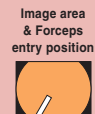
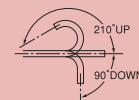
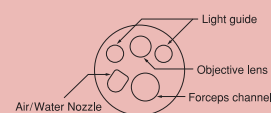
G5-ENDOSCOPY

SUPER
IMAGE

WIDE VIEW

410K CCD

Viewing direction	Forward
Observation range	5 ~ 100mm
Field of view	140°
Distal end diameter	9.4mm
Flexible portion diameter	9.3mm
Bending capability : UP	210°
	DOWN 90°
	LEFT 100°
	RIGHT 100°
Forceps channel diameter	2.8mm
Working length	1,100mm
Total length	1,400mm



For the Upper G.I. Tract -Slim type

EG-250PE5

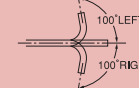
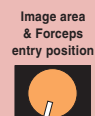
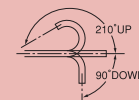
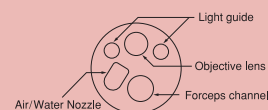
The slim EG-250PE5 Video Gastroscope is ideal for patients with difficult or stenosed anatomy. Utilizing the very latest Fujinon technology for a slimmer insertion tube is the EG-250PE5 gastrointestinal videoscope. The EG-250PE5 offers a narrow 8.1mm diameter insertion tube and 2.2mm diameter channel to provide less patient discomfort while simultaneously supplying a high image quality for accurate observation.

G5-ENDOSCOPY

SLIM

410K CCD

Viewing direction	Forward
Observation range	4 ~ 100mm
Field of view	120°
Distal end diameter	8.2mm
Flexible portion diameter	8.1mm
Bending capability : UP	210°
	DOWN 90°
	LEFT 100°
	RIGHT 100°
Forceps channel diameter	2.2mm
Working length	1,100mm
Total length	1,400mm





For the Upper G.I. Tract -Ultra slim type

EG-270N5/NH5*

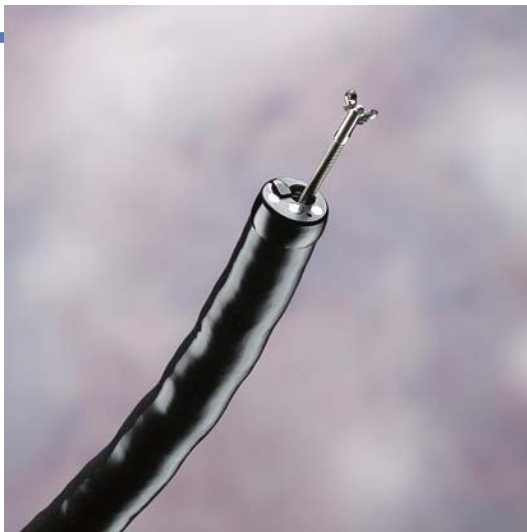
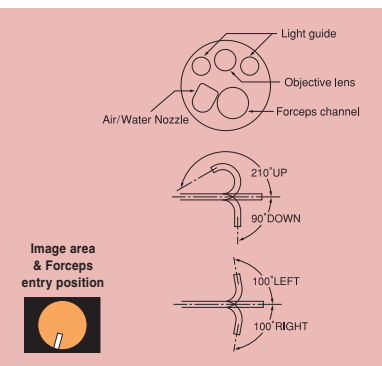
Fujinon's new, ultra-thin video gastroscope, the EG-270N5, incorporates the most recent advancements in the miniaturization of CCD chips. The N5 boasts a 5.9mm insertion tube diameter with a 2.0mm working channel all designed to dramatically improve patient comfort, reduce overall sedation, and improve recovery time. In addition, the ultra-thin design functions perfectly in cases where traditional pediatric gastroscopes are too large.



ULTRA SLIM

*EG-270NH5=Hard Type FSA for insertion through the mouth

Viewing direction	Forward
Observation range	3 ~100mm
Field of view	120°
Distal end diameter	5.9mm
Flexible portion diameter	5.9mm
Bending capability :UP	210°
	DOWN 90°
	LEFT 100°
	RIGHT 100°
Forceps channel diameter	2.0mm
Working length	1,100mm
Total length	1,400mm



For the Upper G.I. Tract -Treatment type

EG-250CT5

Therapeutic in function with a 3.8 mm forceps channel and a 10.8mm outer diameter, the EG-250CT5 is a versatile endoscope. The CT5 was designed with Fujinon's industry leading high-resolution 410,000 pixel CCD chip – the cornerstone of all Fujinon endoscopes. The advanced design of the CT5 provides for a forward water jet function that allows easy washing and dye spraying of lesions to enhance the physician's diagnostic and therapeutic capabilities.



SUPER IMAGE

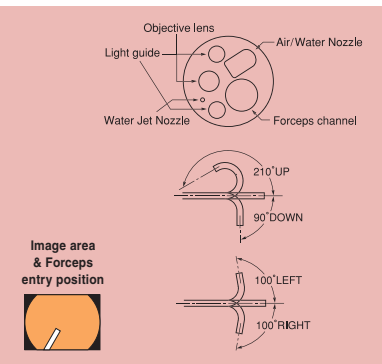
WIDE VIEW

410K CCD

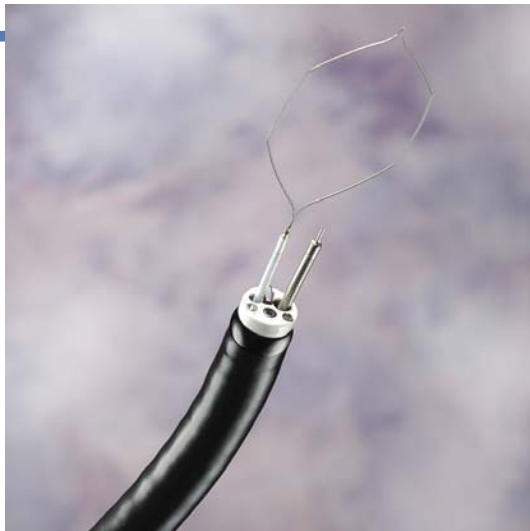
BIG CHANNEL

WATER JET

Viewing direction	Forward
Observation range	5 ~100mm
Field of view	140°
Distal end diameter	10.8mm
Flexible portion diameter	10.8mm
Bending capability :UP	210°
	DOWN 90°
	LEFT 100°
	RIGHT 100°
Forceps channel diameter	3.8mm
Working length	1,100mm
Total length	1,400mm



G5 Scope for the Upper G.I. Tract & the Duodenum



For the Upper G.I. Tract - Dual-channel type

EG-250D5

Fujinon's new double channel gastroscopy, the D5, offers two large forceps channels measuring 3.8 mm and 2.8 mm, all within a remarkable distal end diameter of 11.5 mm. The dual channels allow for smooth operation during procedures such as EMR (endoscopic mucosal resection) and therapeutic procedures. In addition, the D5 incorporates a forward water jet function that allows for easy washing and dye spraying of lesions in procedures involving Chromoendoscopy.



SUPER IMAGE

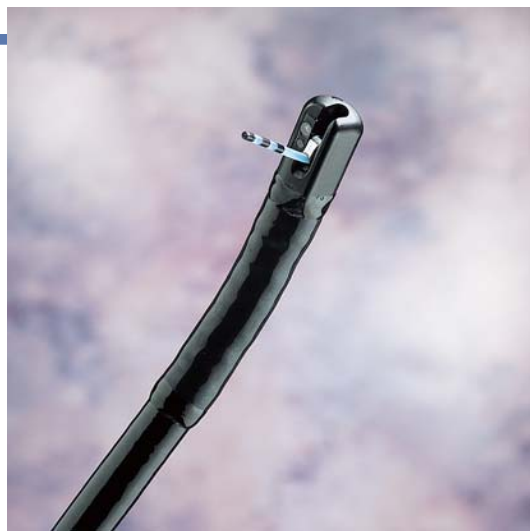
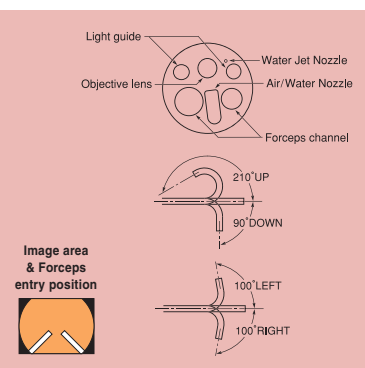
410K CCD

WIDE VIEW

DUAL CHANNEL

WATER JET

Viewing direction	Forward
Observation range	5 ~ 100mm
Field of view	140°
Distal end diameter	11.5mm
Flexible portion diameter	11.5mm
Bending capability : UP	210°
DOWN	90°
LEFT	100°
RIGHT	
Forceps channel diameter	3.8/2.8mm
Working length	1,090mm
Total length	1,390mm



For the Duodenum - Standard type

ED-250XL5

The ED-250XL5 is a traditional diagnostic duodenoscope offering a 3.2mm working channel inside an insertion tube of only 10.8mm. The distal end diameter is 12.5mm and incorporates a 15° retrograde lens and Fujinon's world class 410,000 pixel CCD chip. In addition, the XL5 has a sealed elevator channel that totally alleviates the traditional disinfection concerns of elevator mechanisms, and provides much smoother operation.

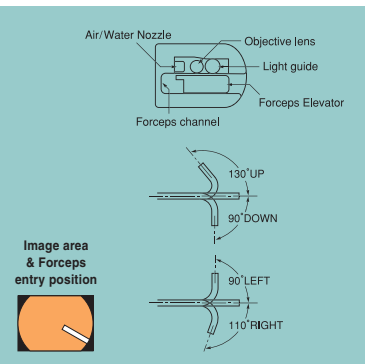


SUPER IMAGE

410K CCD

NEW ELEVATION

Viewing direction	Lateral (15° rearward)
Observation range	4 ~ 60mm
Field of view	100°
Distal end diameter	12.5mm
Flexible portion diameter	10.8mm
Bending capability : UP	130°
DOWN	90°
LEFT	110°
RIGHT	
Forceps channel diameter	3.2mm
Working length	1,250mm
Total length	1,550mm



G5 Scope for the Duodenum & the Lower G.I. Tract



For the Duodenum -Treatment type

ED-250XT5

Fujinon's new large channel duodenoscope, the ED-250XT5, is capable of performing every endoscopic procedure in the common bile duct and pancreatic duct with its large 4.2 mm forceps channel. The diameter of the flexible section is a slim 11.8 mm, and the smaller bending radius and shortened bending section allows for easier access for complete therapeutic function. As with all Fujinon endoscopes, the XT5 incorporates a 410,000 pixel CCD chip for unparalleled visual performance.



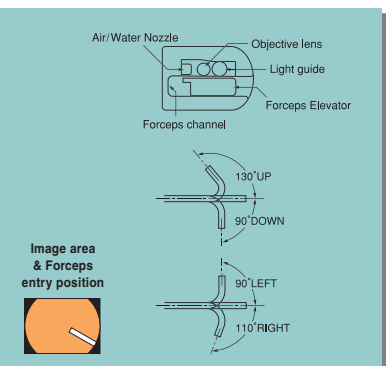
SUPER IMAGE

410K CCD

BIG CHANNEL

NEW ELEVATION

Viewing direction	Lateral(8°rearward)
Observation range	4 ~ 60mm
Field of view	100°
Distal end diameter	13.1mm
Flexible portion diameter	11.8mm
Bending capability :UP	130°
	DOWN
	90°
	LEFT
	110°
	RIGHT
Forceps channel diameter	4.2mm
Working length	1,250mm
Total length	1,550mm



For the Lower G. I. Tract -Standard type /Wide Angle

EC-250WM5/WI5/WL5

These super wide-angle treatment colonoscopes offer a very large 3.8mm working channel inside a slim 12.8mm insertion tube diameter. An ultra-wide 140° field of view enhances image quality from the center to the edge. These colonoscopes also offer a wider observation range from 3-100mm. In addition, an integrated forward water jet allows for lavage in critical situations.

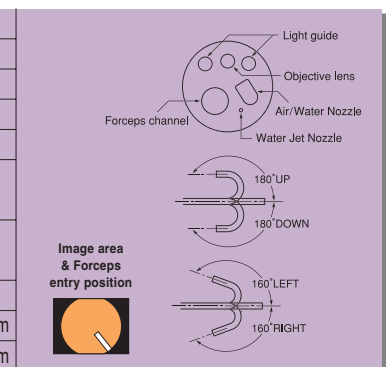


WIDE VIEW

410K CCD

WATER JET

Viewing direction	Forward
Observation range	3 ~ 100mm
Field of view	140°
Distal end diameter	12.8mm
Flexible portion diameter	12.8mm
Bending capability :UP	180°
	DOWN
	180°
	LEFT
	160°
	RIGHT
Forceps channel diameter	3.8mm
Working length	1,330/1,520/1,690mm
Total length	1,630/1,820/1,990mm



G5 Scope for the Lower G.I. Tract



For the Lower G.I. Tract -Standard type / Super Image

EC-250HL5

A super-image colonoscope, the EC-250HL5 has a large 3.8mm diameter channel and an ultra wide field of view of 140°. This gives you wide and dynamic images for easier tract tracing and more accurate orientation. The improved operating portion with lighter weight and reduced bending torque also allows more comfortable operation and easier treatment. In addition, an integrated forward water jet allows for lavage in critical situations.



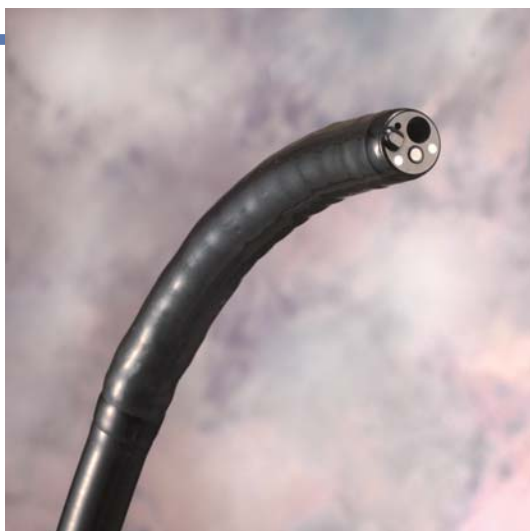
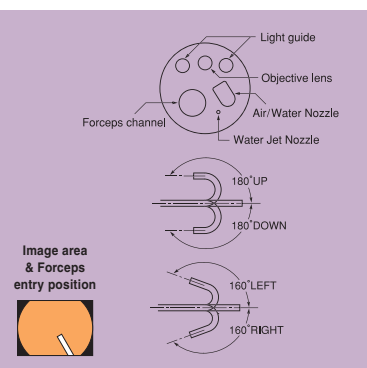
SUPER IMAGE

WIDE VIEW

410K CCD

WATER JET

Viewing direction	Forward
Observation range	5 ~ 100mm
Field of view	140 °
Distal end diameter	12.8mm
Flexible portion diameter	12.8mm
Bending capability : UP	180 °
DOWN	
LEFT	
RIGHT	160 °
Forceps channel diameter	3.8mm
Working length	1,690mm
Total length	1,990mm



For the Lower G.I. Tract -Slim type

EC-250LS5

Fujinon brings advancements in insertion tube design to its new super slim colonoscope, the EC-250LS5. The LS5 offers the insertion characteristics of an adult colonoscope, but has a slim 11.5mm outside diameter and a generous 3.8mm working channel. Perfect for pediatric patients, smaller adult females, and elderly patients, the LS5 offers superior handling in every regard. In addition, an integrated forward water jet allows for lavage in critical situations.



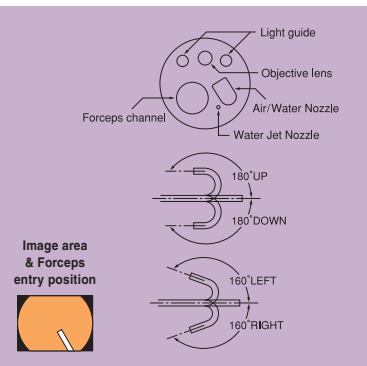
SLIM

SUPER IMAGE

WIDE VIEW

WATER JET

Viewing direction	Forward
Observation range	5 ~ 100mm
Field of view	140 °
Distal end diameter	11.5mm
Flexible portion diameter	11.5mm
Bending capability : UP	180 °
DOWN	
LEFT	
RIGHT	160 °
Forceps channel diameter	3.8mm
Working length	1,690mm
Total length	1,990mm





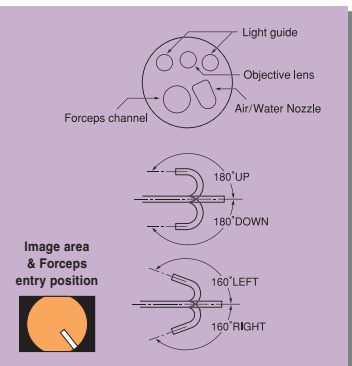
For the Lower G.I. Tract - Slim type

EC-250MP5

EC-250MP5 is slimmer than conventional adult colonoscopes with an 11.0mm outer diameter insertion tube, yet still features a 3.2mm working channel that is suitable for routine colonoscopy. It is easy to intubate and maneuver, and is more comfortable for patients, especially children and adults with strictures. Superior image quality, extra-wide 140° field of view and extensive 4-way angulation (180° up/down and 160° left/right) enable complete examination of the colon.

G5 ENDOSCOPY **SLIM** **410K CCD** **WIDE VIEW**

Viewing direction	Forward
Observation range	3 ~ 100mm
Field of view	140°
Distal end diameter	11.0mm
Flexible portion diameter	11.1mm
Bending capability : UP	180°
DOWN	
LEFT	
RIGHT	160°
Forceps channel diameter	3.2mm
Working length	1,330mm
Total length	1,630mm



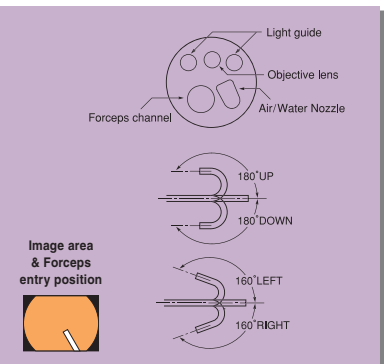
For the Lower G.I. Tract - Slim type

EC-250LP5

Fujinon brings advancements in insertion tube design to its new super slim colonoscope, the EC-250LP5. The LP5 offers the insertion characteristics of an adult colonoscope, but has a slim 11.1mm outside diameter and a generous 3.2mm working channel. Perfect for pediatric patients, smaller adult females, and elderly patients, the LP5 offers superior handling in every regard.

G5 ENDOSCOPY **SLIM** **SUPER IMAGE** **WIDE VIEW** **410K CCD**

Viewing direction	Forward
Observation range	5 ~ 100mm
Field of view	140°
Distal end diameter	11.0mm
Flexible portion diameter	11.1mm
Bending capability : UP	180°
DOWN	
LEFT	
RIGHT	160°
Forceps channel diameter	3.2mm
Working length	1,690mm
Total length	1,990mm



G5 Scope for the Lower G.I. Tract



For the Lower G.I. Tract -Dual-channel type

EC-250DM5/DL5

With its sharp image, wide 140° field of view, and slim 12.8 mm outer diameter, Fujinon's DM5/DL5 colonoscope combines the features of a standard colonoscope with the benefits of dual channel therapeutic capability. Impressive 3.8mm and 2.8mm working channels allow for a wide range of advanced procedures while maintaining patient comfort. The incorporated forward water jet function assists in critical lavage, and adds easier dye spraying application.



SUPER IMAGE

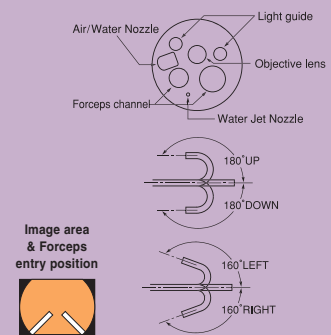
410K CCD

WIDE VIEW

DUAL CHANNEL

WATER JET

Viewing direction	Forward
Observation range	5 ~ 100mm
Field of view	140 °
Distal end diameter	12.8mm
Flexible portion diameter	12.8mm
Bending capability : UP	180 °
DOWN	
LEFT	
RIGHT	160 °
Forceps channel diameter	3.8/2.8mm
Working length	1,330/1,690mm
Total length	1,630/1,990mm



For the Lower G.I. Tract -Super wide angle sigmoidoscope

ES-250WE5

The WE5 sigmoidoscope has a wide 140° field of view and clear image for meticulous examination. It incorporates a 3.8 mm working channel allowing not only for the use of a wide range of therapeutic accessories but also for powerful aspiration during procedures. This general purpose scope provides excellent performance for both examination and treatment. In addition, an integrated forward water jet allows for lavage in critical situations.



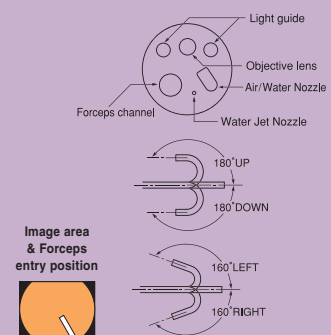
SUPER IMAGE

410K CCD

WIDE VIEW

WATER JET

Viewing direction	Forward
Observation range	5 ~ 100mm
Field of view	140 °
Distal end diameter	12.8mm
Flexible portion diameter	12.8mm
Bending capability : UP	180 °
DOWN	
LEFT	
RIGHT	160 °
Forceps channel diameter	3.8mm
Working length	790mm
Total length	1,090mm



2200 ELECTRONIC VIDEO ENDOSCOPY SYSTEM

ENDOSCOPE
(200, 250, 270SERIES)



For the Upper G.I. Tract
For the Duodenum
For the Lower G.I. Tract

PROCESSOR
EPX-2200



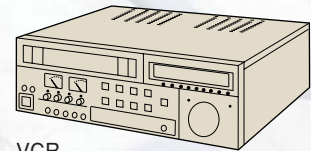
MONITOR



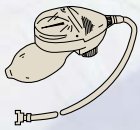
EVE Module
EM-200



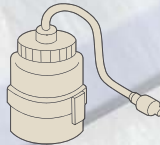
SURGICAL UNITS



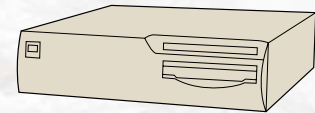
VCR



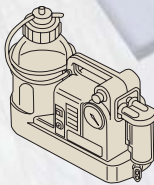
AIRTIGHTNESS
TESTER



WATER-TANK



VIDEO PRINTER



SUCTION PUMP



ADAPTER FOR NON-FUJINON
CLEANING MACHINES

FUJIFILM GROUP

FUJINON CORPORATION

1-324 UETAKE, KITA-KU, SAITAMA CITY, SAITAMA 331-9624, JAPAN
TEL : 81-48-668-2153 FAX : 81-48-668-1570
E-mail:sales@msv.fujinon.co.jp
URL <http://www.fujinon.co.jp/>

FUJINON INC.

10 HIGH POINT DRIVE, WAYNE, NJ 07470, U.S.A.
TEL : 1-800-490-0661 FAX : 1-973-633-8818
E-mail : med.info@fujinon.com
URL <http://www.fujinonendoscopy.com/>

FUJINON (EUROPE) GmbH

HALSKESTRASSE 4, 47877 WILLICH, GERMANY
TEL : 49-2154-924-0 FAX : 49-2154-924-290
E-mail : Fujinon@fujinon.de
URL <http://www.fujinon.de/>

FUJINON SINGAPORE PTE. LTD.

BLK 211 HENDERSON ROAD, #10-04 HENDERSON INDUSTRIAL PARK, SINGAPORE, 159552
TEL : 65-6276-4988 FAX : 65-6276-6911
E-mail : fujinon@fujinon.com.sg URL <http://www.fujinon.com.sg/>

FUJINON AUSTRALIA PTY. LTD.

UNIT-18, 52 HOLKER STREET, SILVERWATER N.S.W. 2128, AUSTRALIA
TEL : 61-2-9748-2744 FAX : 61-2-9748-2428
E-mail : sales@fujinon.com.au

SHANGHAI FUJINON MEDICAL EQUIPMENT CO.,LTD.

FLAT B, 6/FL, SHI MEI BLD,79 RI JING ROAD,
WAI GAO QIAO FREE TRADE ZONE, SHANGHAI, ZIP CODE: 200131 CHINA
TEL : 86-21-5424-9262(Office) TEL:86-21-5866-2151(Service)
FAX : 86-21-5866-2150 E-mail : fjng2001@hotmail.com

Due to a continuous process of product improvement, specifications are subject to change without notice.

G-5 is a registered trademark of Fujinon, Inc.